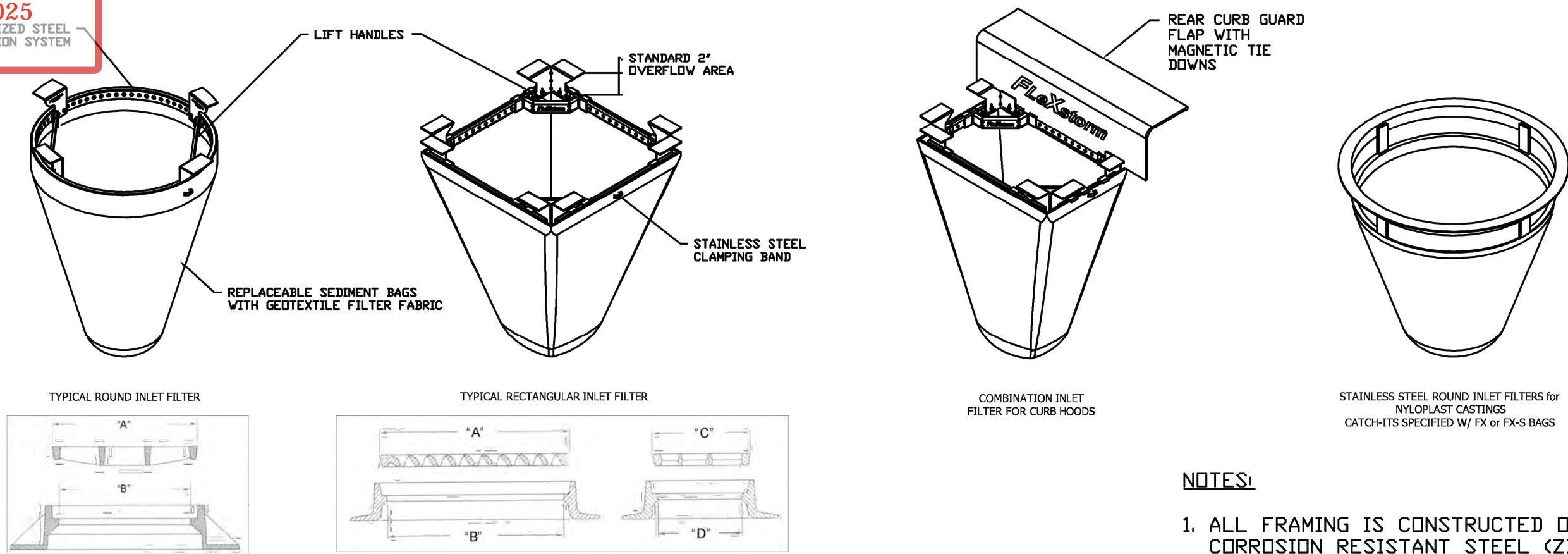


DRC

FLEXSTORM CATCH-IT FILTERS FOR TEMPORARY INLET PROTECTION
P225-R2000071 SELECTION AND SPECIFICATION DRAWING

11/05/2025

11 GA GALVANIZED STEEL SUSPENSION SYSTEM



NOTES:

- ALL FRAMING IS CONSTRUCTED OF CORROSION RESISTANT STEEL (ZINC PLATED OR GALVANIZED) FOR 7 YEAR MINIMUM SERVICE LIFE.
- UPON ORDERING CONFIRMATION OF THE DOT CALLOUT, PRECAST OR CASTING MAKE AND MODEL, OR DETAILED DIMENSIONAL FORMS MUST BE PROVIDED TO CONFIGURE AND ASSEMBLE YOUR CUSTOMIZED FLEXSTORM INLET FILTER. PART NUMBER ALONE IS NOT SUFFICIENT.
- FOR WRITTEN SPECIFICATIONS AND MAINTENANCE GUIDELINES VISIT WWW.INLETFILTERS.COM

SPECIFICATIONS FOR STANDARD BAGS BY NOMINAL SIZE			
Nominal Bag Size	Solids Storage (CuFt)	Filtered Flow Rate at 50% Max (CFS)	IL (NonWoven)
Small	1.6	1.2	0.9
Medium	2.1	1.7	1.3
Large	3.8	2.7	1.9
XL	4.2	3.6	2.6

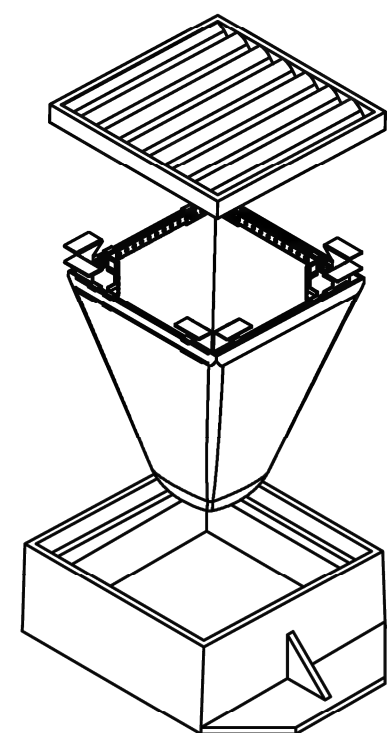
1. IDENTIFY YOUR FRAME STYLE AND SIZE		Frame P/N:
STYLE	FRAME STYLE AND SIZE	
ROUND	Small Round (up to 20.0" dia grates (A) dim)	62SRD
	Med Round (20.1" - 26.0" dia grates (A) up to 25" dia openings (B))	62MRD
	Large Round (26.1" - 32.0" dia grates (A) up to 30" openings (B))	62LRD
	XL Round (32.1" dia - 39" dia grates (A) up to 37" dia openings (B))	62XLRD
RECT / SQUARE	Small Rect / Square (up to 16" (B) x 16" (D) openings or 64" perimeter)	62SSQ
	Med Rect / Square (up to 24" (B) x 24" (D) openings or 96" perimeter)	62MSQ
	Large Rect / Square (up to 36" (B) x 24" (D) openings or 120" perimeter)	62LSQ
	XL Rect / Square (side by side 2 pc set to fit up to 48" (B) x 36" (D) openings)	62XLSQ
COMBO INLETS	Small Rect / Square (ref Rect sizing; shipped with Magnetic Curb Flaps)	62SCB
	Med Rect / Square (ref Rect sizing; shipped with Magnetic Curb Flaps)	62MCB
	Large Rect / Square (ref Rect sizing; shipped with Magnetic Curb Flaps)	62LCB
	XL Rect / Square (ref Rect sizing; shipped with Magnetic Curb Flaps)	62XLCB
NYLOPLAST	12" diameter Nyloplast castings (Stainless Steel Framing standard)	6212NY
	15" diameter Nyloplast castings (Stainless Steel Framing standard)	6215NY
	18" diameter Nyloplast castings (Stainless Steel Framing standard)	6218NY
	24" diameter Nyloplast castings (Stainless Steel Framing standard)	6224NY
	30" diameter Nyloplast castings (Stainless Steel Framing standard)	6230NY

2. SELECT YOUR BAG PART NUMBER				
FLEXSTORM FILTER BAGS	(22" depth) STD Bag P/N	(12" depth) Short Bag P/N	Clean Water Flow Rate (GPM/SqFt)	Min A.O.S. (US Sieve)
FX: Standard Woven Bag	FX	FX-S	200	40
IL: IDOT Non-Woven Bag	IL	IL-S	145	70

3. CREATE YOUR FLEXSTORM INLET FILTER PART NUMBER	
Frame P/N from Step 1.	Filter Bag P/N from Step 2.

INSTALLATION:

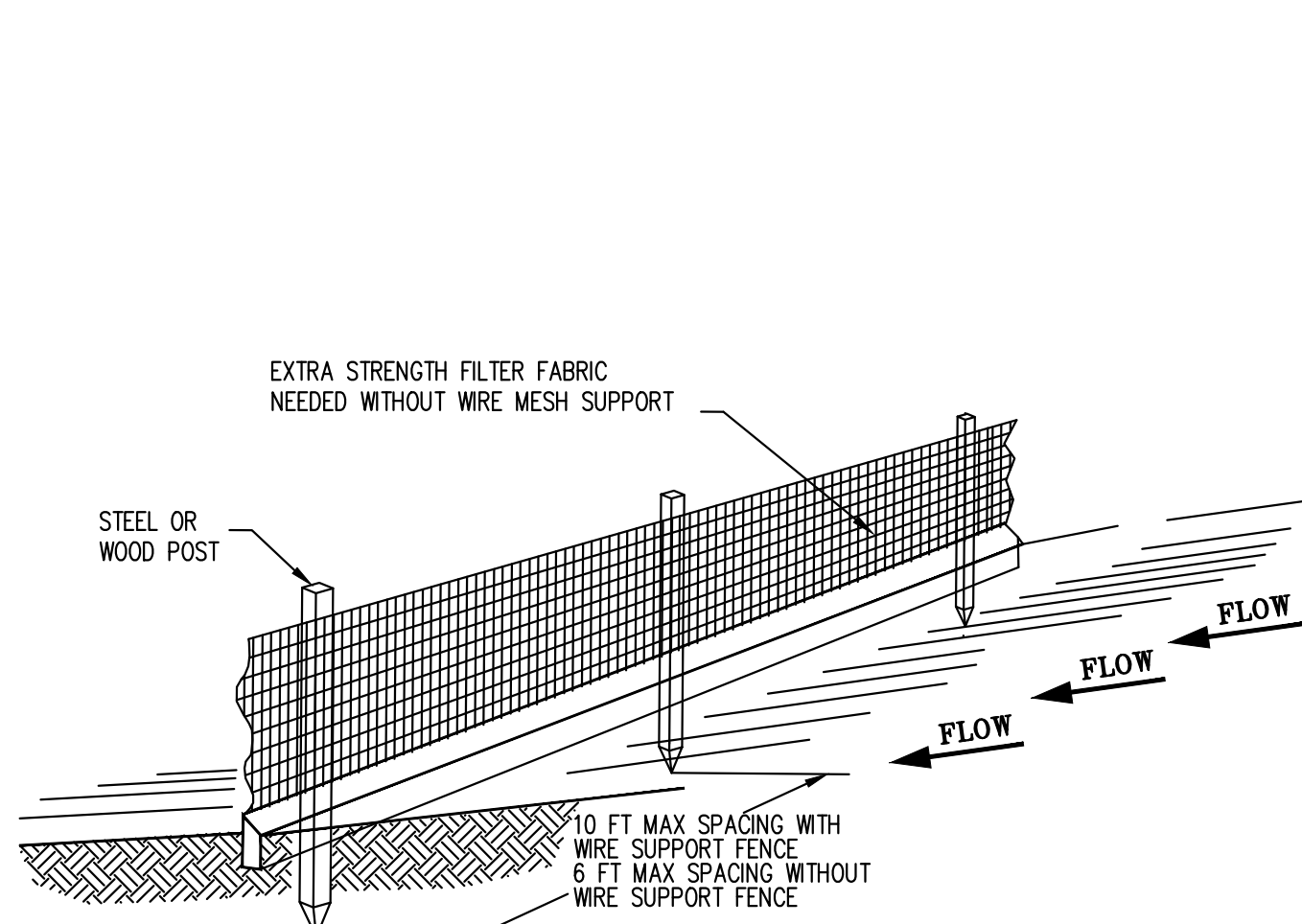
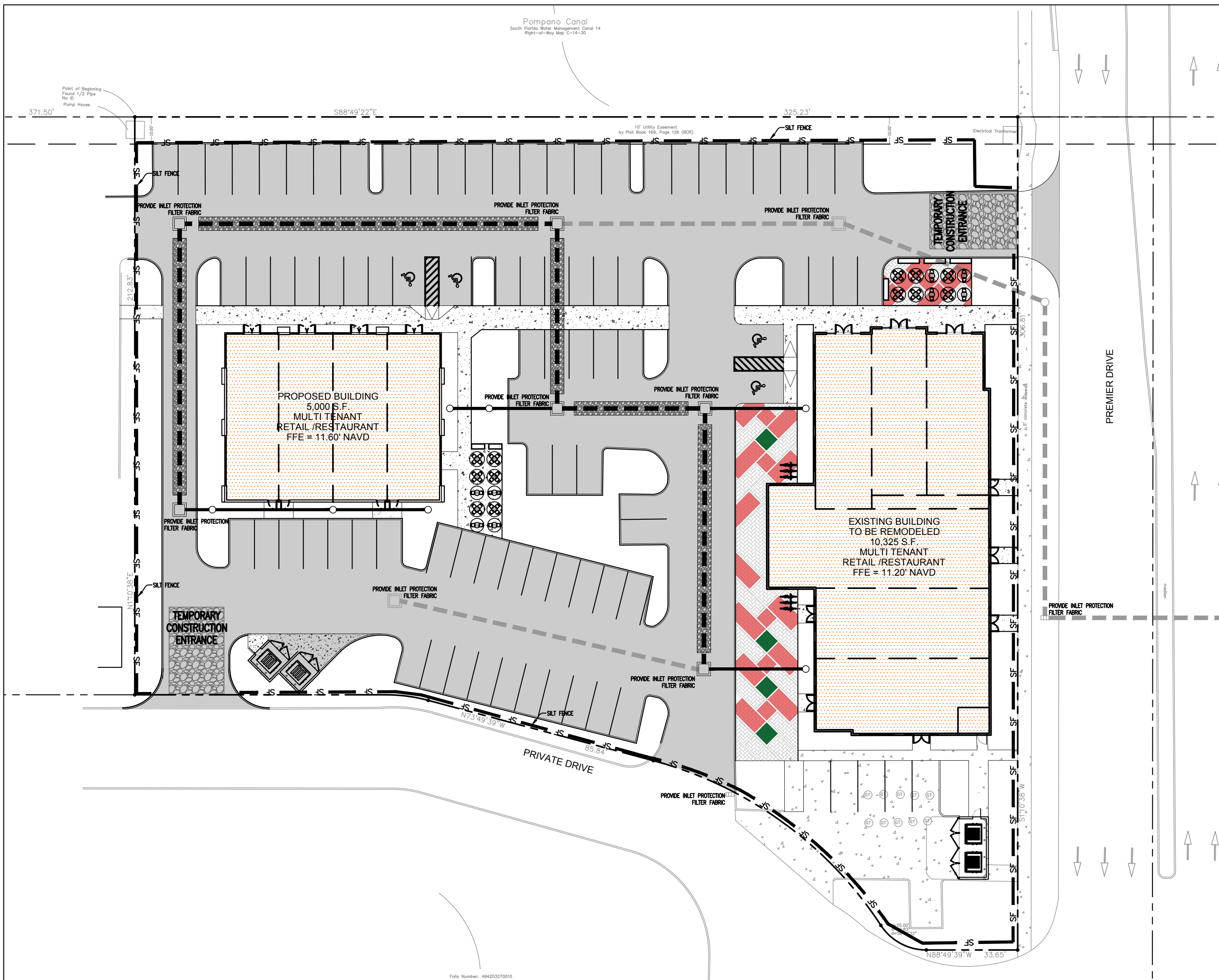
- REMOVE GRATE
- DROP FLEXSTORM INLET FILTER ONTO LOAD BEARING LIP OF CASTING OR CONCRETE STRUCTURE
- REPLACE GRATE



FLEXSTORM
INLET FILTERS.
CATCH IT

ALL PRODUCTS MANUFACTURED BY INLET & PIPE PROTECTION, INC A DIVISION OF ADS, INC.
WWW.INLETFILTERS.COM
(866) 287-8655 PH
(630) 355-3477 FX
INFO@INLETFILTERS.COM

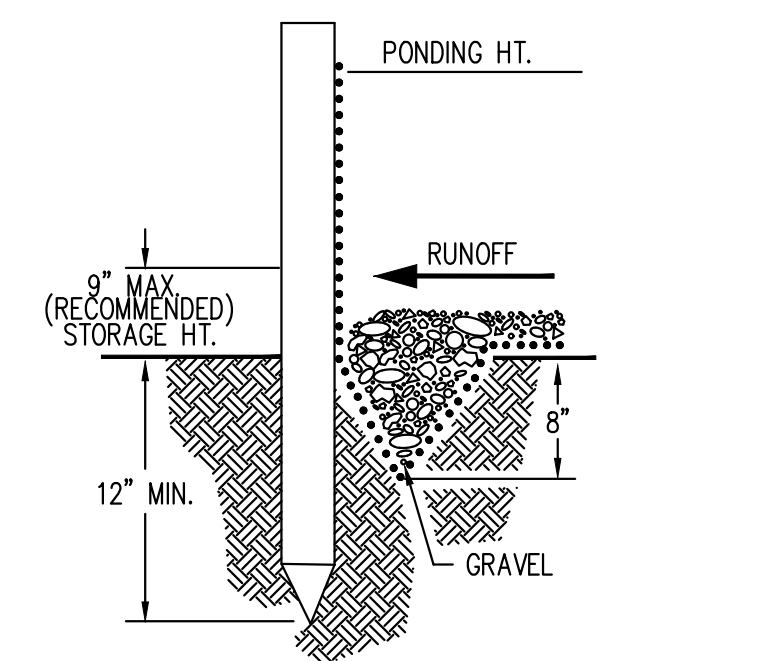
SIZE: C DWG NO: FLEXSTORM_CATCH_IT REV: A
SCALE: SHEET 1 OF 1



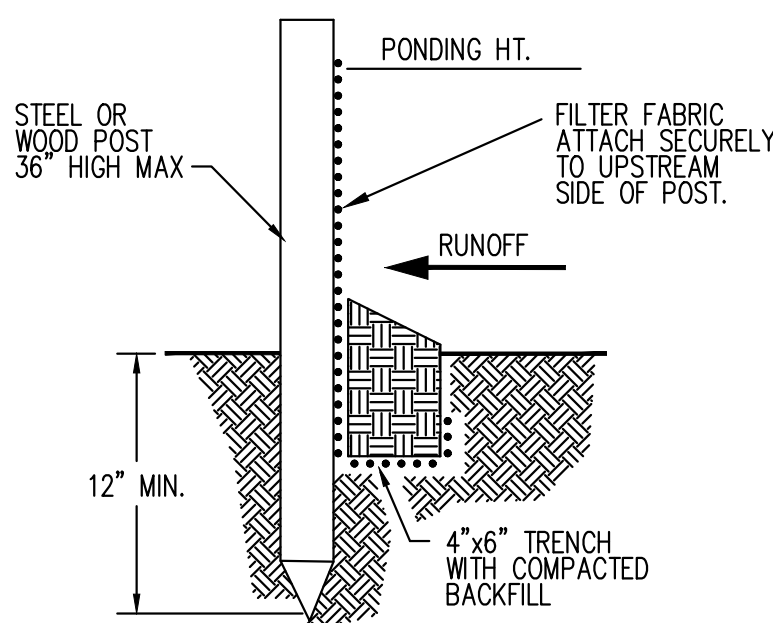
NOTE:

- INSPECT AND REPAIR FENCE AFTER EACH STORM EVENT AND REMOVE SEDIMENT WHEN NECESSARY.
- REMOVED SEDIMENT SHALL BE DEPOSITED TO AN AREA THAT WILL NOT CONTRIBUTE SEDIMENT OFF-SITE AND CAN BE PERMANENTLY STABILIZED.
- SILT FENCE SHALL BE PLACED ON SLOPE CONTOURS TO MAXIMIZE PONDING EFFICIENCY.

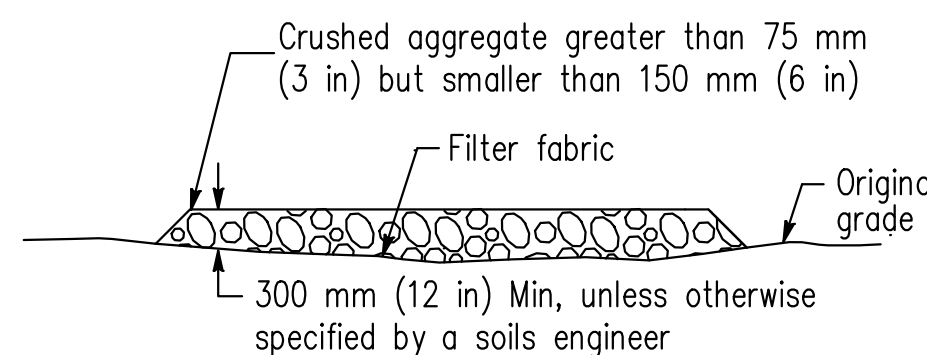
SILT FENCE DETAIL
SCALE: NTS



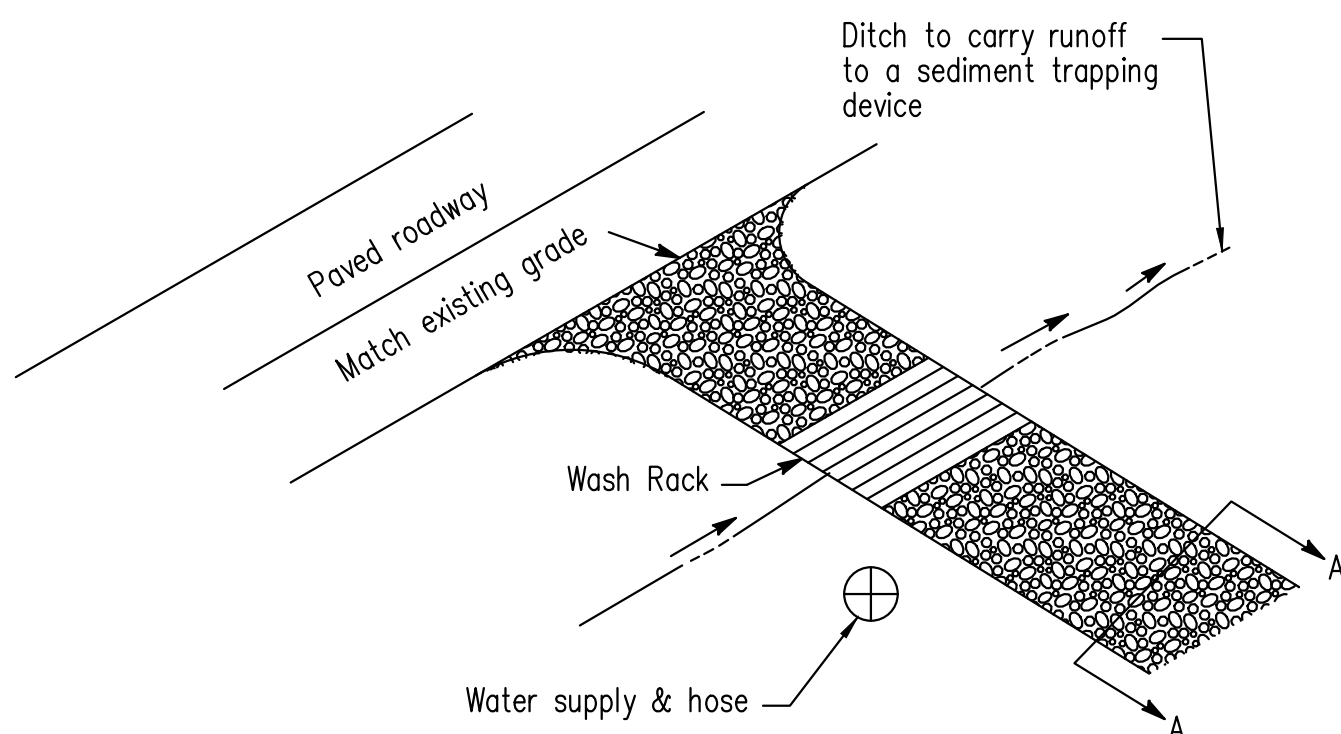
ALTERNATE DETAIL
TRENCH WITH GRAVEL



STANDARD DETAIL
TRENCH WITH NATIVE BACKFILL



SECTION A-A
NTS



TYPICAL TIRE WASH
NOT TO SCALE

STABILIZED CONSTRUCTION ENTRANCE
SCALE: NTS

NOTES:

- ALL EROSION AND SILTATION CONTROL METHODS SHALL BE IMPLEMENTED PRIOR TO THE START OF THE DEMOLITION AND MAINTAINED UNTIL CONSTRUCTION IS COMPLETED.
- IF WIND EROSION BECOMES SIGNIFICANT DURING CONSTRUCTION, THE CONTRACTOR SHALL STABILIZE THE AFFECTED AREA USING SPRINKLING, IRRIGATION OR OTHER ACCEPTABLE METHODS.

SITE LEGEND:

SYMBOL	DESCRIPTION
— SF —	PROPOSED SILT FENCE

SEQUENCING:

THE SILT FENCE INSTALLATION SHALL BE SEQUENCED WITH CONSTRUCTION ACTIVITIES. PORTIONS OF THE SILT FENCE MAY BE INSTALLED OR REMOVED AT DIFFERENT TIMES THROUGHOUT THE PROJECT. THE SILT FENCE IS ONLY REQUIRED IF THE ADJACENT GROUND SURFACE HAS BEEN DISTURBED OR IF STORMWATER RUNOFF FROM OTHER AREAS OF WORK ARE FLOWING THROUGH THE INTENDED SECTION OF SILT FENCE. PORTIONS OF THE SILT FENCE MAY BE OPENED FOR PEDESTRIAN ACCESS TO OPERATING BUSINESSES AS NECESSARY AS LONG AS THE SILT FENCE IS IN PLACE WHEN CONSTRUCTION ACTIVITIES IN THE AREA ARE COMMENCED.

ALL INLET FILTERS SHALL REMAIN IN PLACE FOR THE DURATION OF CONSTRUCTION.

This item has been digitally signed and sealed by John E Flynn, P.E on the date adjacent to the seal.

Printed copies of this document are not considered signed and sealed and the signature must be verified on any electronic copies.

GRACE ENGINEERING

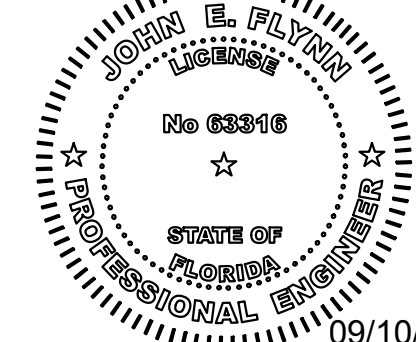
Civil Engineering Consultants

17110 SW 64th Court

Southwest Ranches, Florida 33331

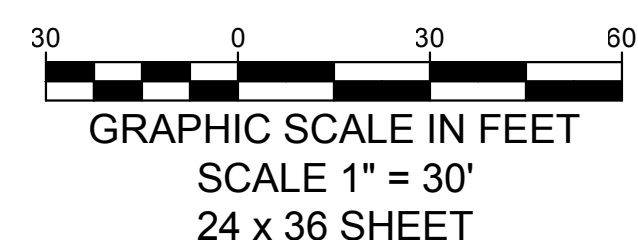
GraceEngineeringLLC@gmail.com

754.200.4534



JOHN E. FLYNN, P.E.
Florida License No. 63316
GRACE ENGINEERING, LLC
Certificate of Authorization No. 29280

GRADE ELEVATIONS
ARE IN NAVD88 DATUM



Sunshine811

Call 811 or visit sunshine811.com two full business days before digging to have buried facilities located and marked.
Check positive response codes before you dig!

DTI
ARCHITECTS
Associates, Inc. AA24001933

ARCHITECTURE | PLANNING | INTERIOR DESIGN

14125 NW 80th Avenue Suite 303
Miami Lakes - Florida - 33016
dtiinfo@dtiarchitect.com
www.dtiarchitect.com

Revisions:
DRC COMMENTS
09.10.2025

OWNER / DEVELOPER:

RED LINK MANAGEMENT
CORP

2750 NE 185TH ST. #304
AVENTURA, FLORIDA 33180

PROJECT:

FOLIO 4942-03-27-0012
PROPOSED SHELL BLDG @
2100 WEST ATLANTIC BLDG

2100 W ATLANTIC BLVD
POMPANO BEACH, FLORIDA 33069

Job Number: 24109.01

File name:

Issued Date: 04-23-2025

Drawn by: A.S

Checked by: T.R.

SHEET NAME

SWPPP

SHEET NUMBER

C-4